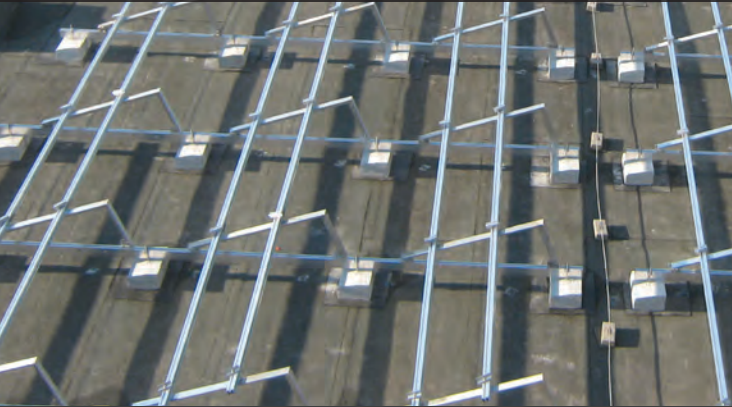


BISOL EasyMount Structures

Premium mounting solutions designed for simplicity and ease of installation.



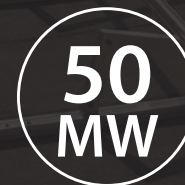
Solar company!



Smart solutions
for every roof
type



Superior
mechanical
strength



Installed in +50
MW of solar
systems



Up to 15
years product
warranty

www.bisol.com



BISOL EasyMount HDPE Base 200

Quick and easy mounting solution for flat roofs

BISOL EasyMount HDPE Base 200 is a premium mounting solution for PV installations on flat roofs or surfaces. It requires no roof penetration and allows for the PV modules to be positioned at a 20° angle. The cutting edge mounting solution has been developed in-house and combines superior design with durability for extreme ease of installation and long-term performance. BISOL EasyMount HDPE Base 200 is made of highest quality recyclable materials and will leave a positive mark on the environment.

Technical Specifications

Application	Flat roofs with up to 5° roof inclination
Method of installation	No roof penetration
Module angle	20°
Module orientation	Landscape
Module frame tolerances	Length: any Width: 991 mm ± 5 mm (39.02" ± 0.2") Thickness: 34 - 41 mm (1.339" - 1.614") Reverse side width: 27 - 32 mm (1.06" - 1.26")
Base colour	Carbon black
Base material	Base: high-density polyethylene - HDPE, carbon black, UV-resistant Screws: glass fibre reinforced polypropylene
Base weight	5.5 kg (12.1 lbs)
Additional stabilization	Ballast and Windshields
Temperature range	-20 to 70°C
Snow load per system	0 - 2.40 kN/m ²
Wind load (velocity) ⁽¹⁾	0 - 115 km/h (71 mph)

⁽¹⁾ With the use of ballast and wind shields according to the specifications.



8x faster installation



No tools required



Low installation cost



15-year UV and mechanical resistance guarantee



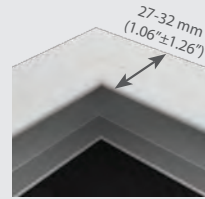
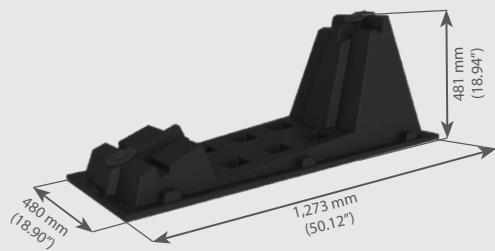
Lightweight and stackable



Efficient cooling

BISOL EasyMount HDPE Base 200

Dimensions of HDPE Base 200:



Allowed frame width on the reverse side of the module

Layout guidelines depending on incident angle of the sun in the winter

Incident angle of the sun in the winter	A	B
17°	767 mm (30.20")	2,040 mm (80.31")
18°	701 mm (27.60")	1,974 mm (77.72")
19°	643 mm (25.31")	1,916 mm (75.43")
20°	589 mm (23.19")	1,862 mm (73.31")

Individual components:

	ID Code	Component description
1	SEKP-EMPB200_BK	EasyMount HDPE 200 Base Basic Kit
2	SEK-LOAD_CP15	Load Concrete plate 40/40/4cm (15kg)
3	SEK-EMPB_200_TWS	Trapezoidal Wind Shield HDPE 200 (anthracite / black)
4	SEK-JA3_65_25	Screw self-tapping 6,5 x 25 mm JA3

System components:



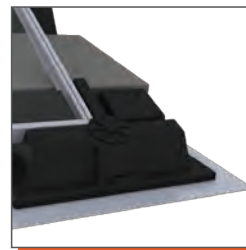
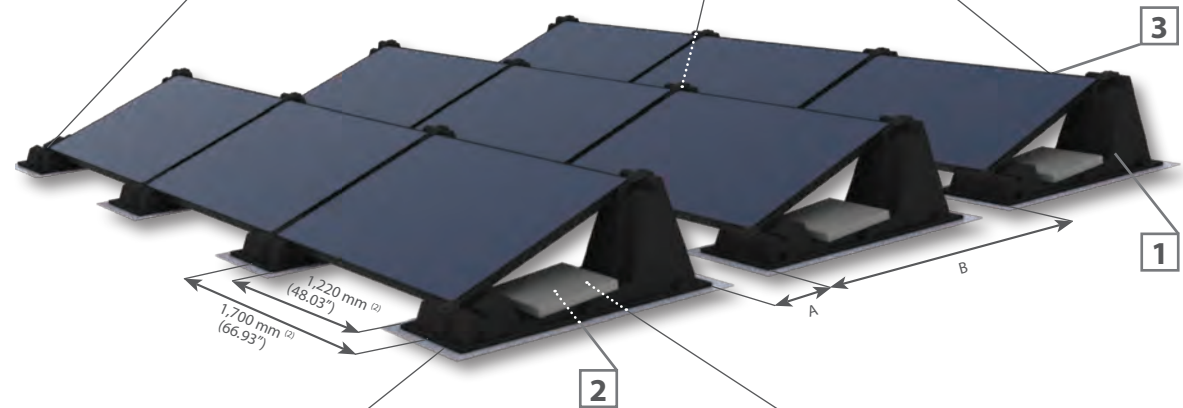
The PV module is placed between two HDPE bases 200 into specially prepared grooves.



The polypropylene screws are inserted into the threaded holes and fixed to lock the PV modules in place.



The metal wind shields can be attached on the reverse side of the HDPE base 200 by using self-drilling screws to improve the stability of the structure in high wind zones.



For roof membrane protection a protective mats can be used.



Extra ballast can be placed at the bottom of the HDPE base 200.

⁽²⁾ Dimensions specific for use with BISOL modules.



BISOL EasyMount HDPE Base 125

Lightweight mounting solution for flat roofs

BISOL EasyMount HDPE Base 125 is made of high-density UV-resistant polyethylene. It requires no roof penetration and can be installed in high wind zones with minimum extra ballast, sparing the roof from unnecessary loads. The innovative mounting solution has been developed in-house and allows an unobtrusive on-roof installation at a 12.5° angle. Its design reflects an expert understanding of the laws of thermodynamics, providing more efficient cooling of the photovoltaic modules.

Technical Specifications

Application	Flat roofs with up to 5° roof inclination
Method of installation	No roof penetration
Module angle	12.5°
Module orientation	Landscape
Module frame tolerances	Width: 991 mm ± 5 mm (39.02" ± 0.20") Length: 1,649 ± 15 mm (64.92" ± 0.59")
Holes on module frame	4 holes / Ø 6 mm (0.24") Distance from the middle of the frame: 450 mm (17.72")
Base colour	Natural white
Base material	UV-resistant high-density polyethylene (HDPE base 125) L-profile: aluminum EN-AW 6060 T5 Fastening elements: stainless steel
Base weight	10.9 kg (24 lbs)
Additional stabilization	Ballast and BISOL EasyMount L-profiles
Temperature range	-20 to 70°C
Snow load per system	0 – 2.40 kN/m ² (with BISOL PV modules)
Wind load (velocity) ⁽³⁾	0 – 140 km/h (87 mph)

⁽³⁾With use of L-profiles and ballast according to specifications.



Higher power-to-surface ratio



No roof penetration



Low-ballast solution



High wind stability



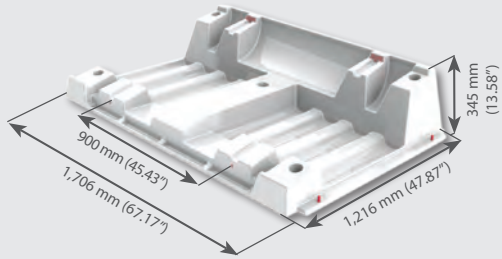
Quick and easy installation



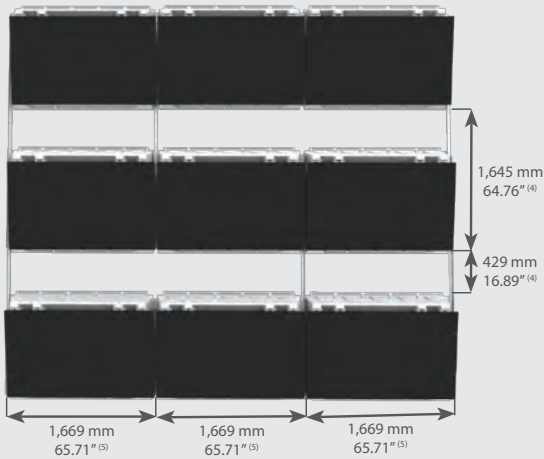
10-year product warranty

BISOL EasyMount HDPE Base 125

Dimensions of HDPE Base 125:



Layout guidelines:

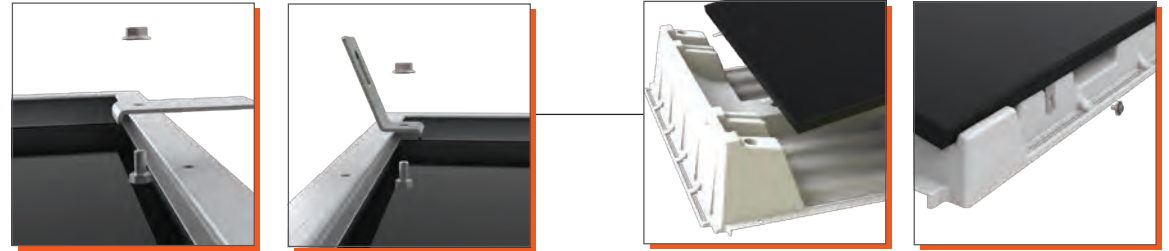


⁽⁴⁾ Layout example for optimal yield-to-installed power ratio in Central Europe. Adjustable upon request.
⁽⁵⁾ Dimensions specific for use with BISOL modules.

Individual components:

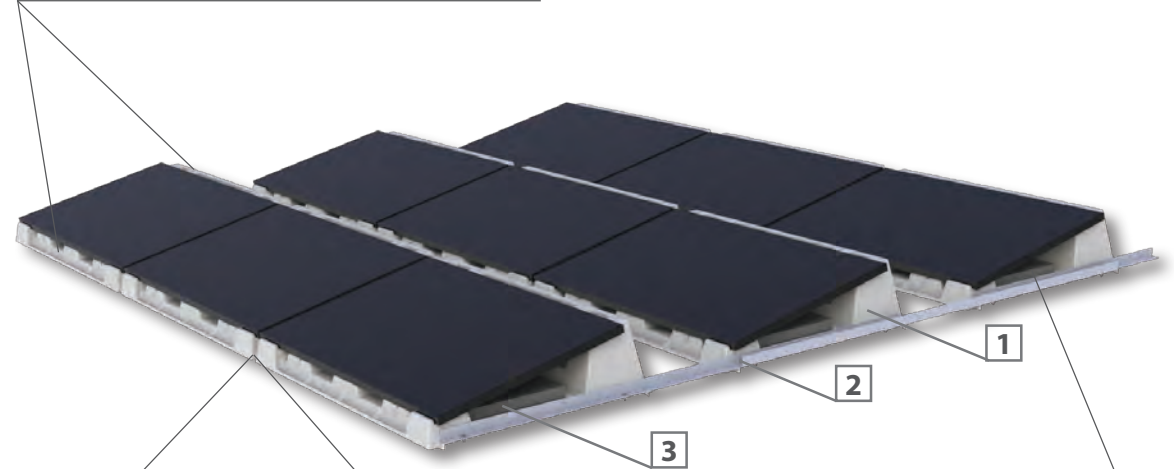
	ID Code	Component description
1	SEKP-EMPB_125_BK	EasyMount HDPE Base 125 Basic Kit
2	SEKP-EMPB_125_RC	EasyMount HDPE Base 125 Row Connecting Set
3	SEK-LOAD_CP15	Load Concrete plate 40/40/4cm (15kg)

System components:



Top and bottom fixings are attached to the PV module via connecting elements.

PV module is attached to the HDPE Base 125 via slide-in top and bottom fixings.



HDPE Bases 125 are horizontally connected, overlapped and attached to each other.



Rows of HDPE Bases 125 are vertically connected by L- profiles.

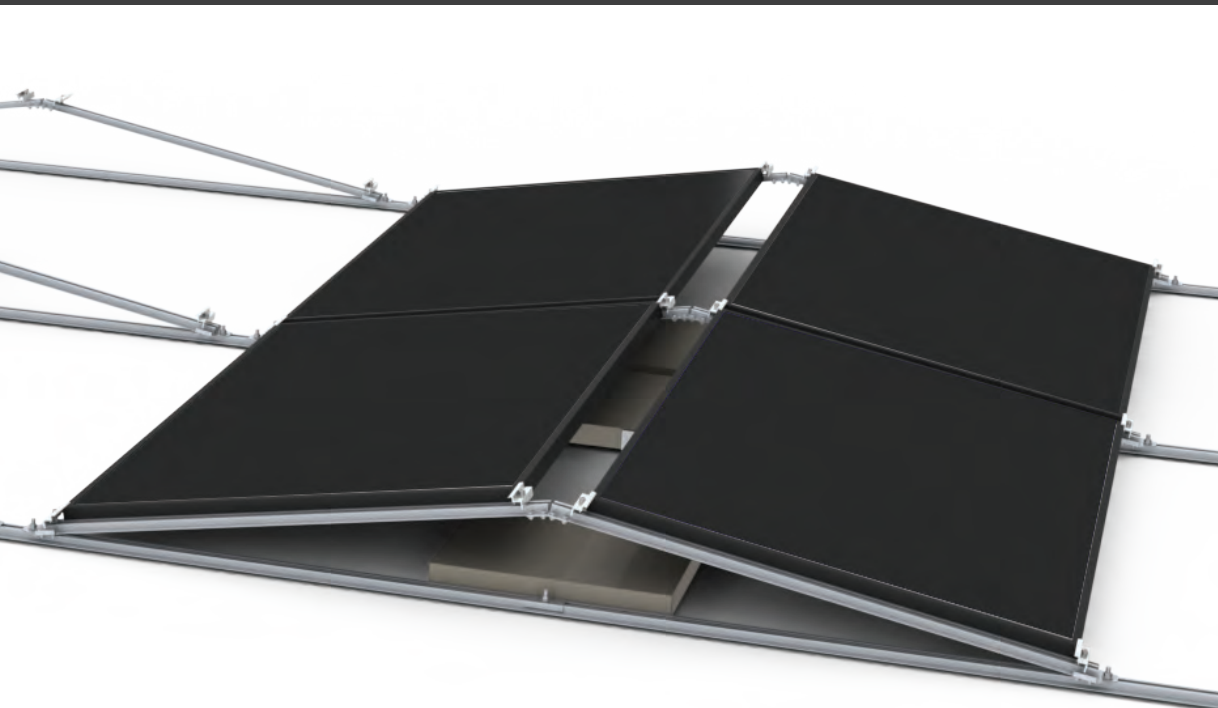
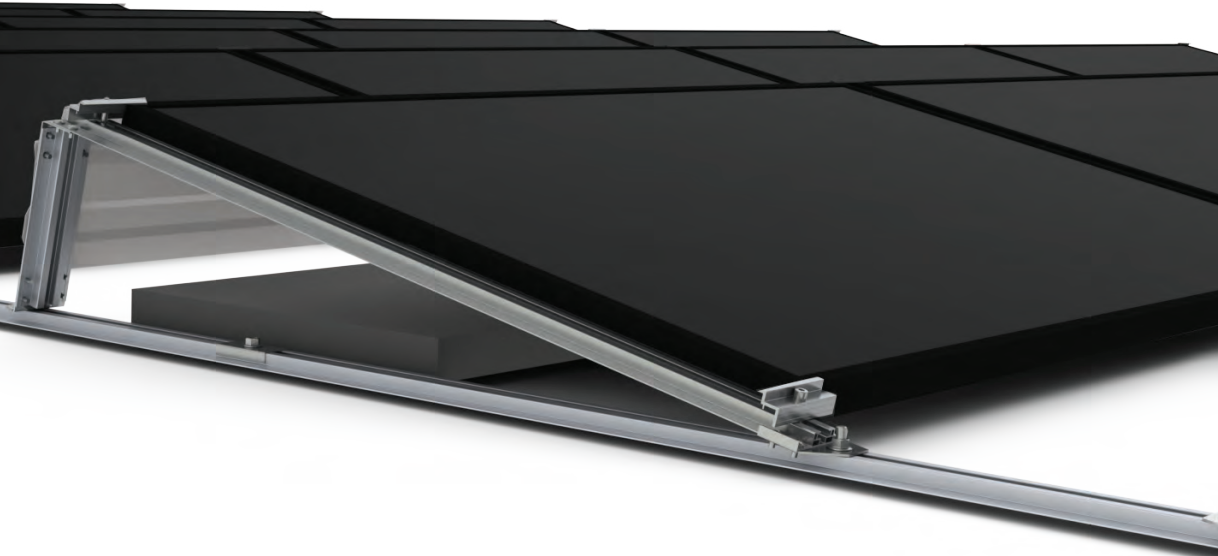


Extra ballast can be placed into the HDPE Base 125.

BISOL EasyMount ALU Base

Cost effective lightweight solution for hassle-free installations

This lightweight, but sturdy mounting solution requires no roof penetration and is suitable for flat roofs covered with bitumen, gravel or synthetic membrane. The ALU Base is available in south-facing or east-west orientation at various inclinations and with adjustable spacing between rows. The entirely free-standing structure is delivered Preassembled to simplify mounting and reduce the installation time.



Technical Specifications	BISOL EasyMount ALU Base 125/200/300	BISOL EasyMount ALU Twin Base 100
Application	Flat roofs with up to 5° roof inclination	
Method of installation	Direct laying without roof penetration	
Module incline	12.5°, 20° and 30° (other angles available upon request)	10°
Module orientation	Landscape	
Module frame tolerances	Length: Any Width: up to 1035 mm (40.75") Frame thickness: 35 – 50 mm (1.38" – 1.97") used with corresponding clamp	
Material	ALU Rail 80: aluminum EN-AW 6060 T6 Fixation elements: stainless steel A2-70	
System weight without ballast	0.015 kN/m ² (without PV module)	0.01 kN/m ² (without PV module)
Snow load per system	0 – 2.40 kN/m ² (with BISOL PV modules)	
Wind load (velocity)	0 – 150+ km/h (93+ mph) ⁽⁶⁾	
Additional stabilization	Ballast / Windshields	Ballast

⁽⁶⁾ Depending on project specifics. More information available upon request.



Fits most PV modules



Adjustable distance between rows



Cost-effective solution



Preassembled components for quick installation



South-facing or east-west orientation



10-year product warranty

Layout guidelines:

Product type	Module incline (°)	Distance between rows - A ⁽⁷⁾
BISOL EasyMount ALU Base 125	12.5°	141 cm (4' 11")
BISOL EasyMount ALU Base 200	20°	153 cm (5' 7")
BISOL EasyMount ALU Base 300	30°	167 cm (7' 7")

⁽⁷⁾ Layout example for optimal yield-to-installed power ratio in Central Europe. Adjustable upon request.

Individual components:

	ID Code	Component description
1	SEKP-EMTAB_125 SEKP-EMTAB_200 SEKP-EMTAB_300	EasyMount ALU Base 125 EasyMount ALU Base 200 EasyMount ALU Base 300
2	SEKP-EMRL80_5850	EasyMount ALU Rail 80 x 5850 mm set
3	SEKP-EMEC20	Clamp end EasyMount 20 mm, preassembled ⁽⁸⁾
4	SEKP-EMCRL80	Connector set for EasyMount Rail 80
5	SEKP-EMT_BPN	Ballast pan for ballast set for ALU Rail 80
6	SEK-EMT_BPNRL	Ballast pan EasyMount for ALU Rail 80, double-sided
7	SEK-LOAD_CP15	Load Concrete plate 40/40/4 cm (15kg)
8	SEK-TWS125_1720W SEK-TWS200_1734W SEK-TWS300_1750W	Windshield 12.5 1700x200mm, white Windshield 20 1700x340mm, white Windshield 30 1700x500mm, white
9	SEK-DIN7504_5525	Screw self-drilling 5,5 x 25 with washer

⁽⁸⁾ For PV modules with 35 mm frame thickness. Clamps with different height available upon request.

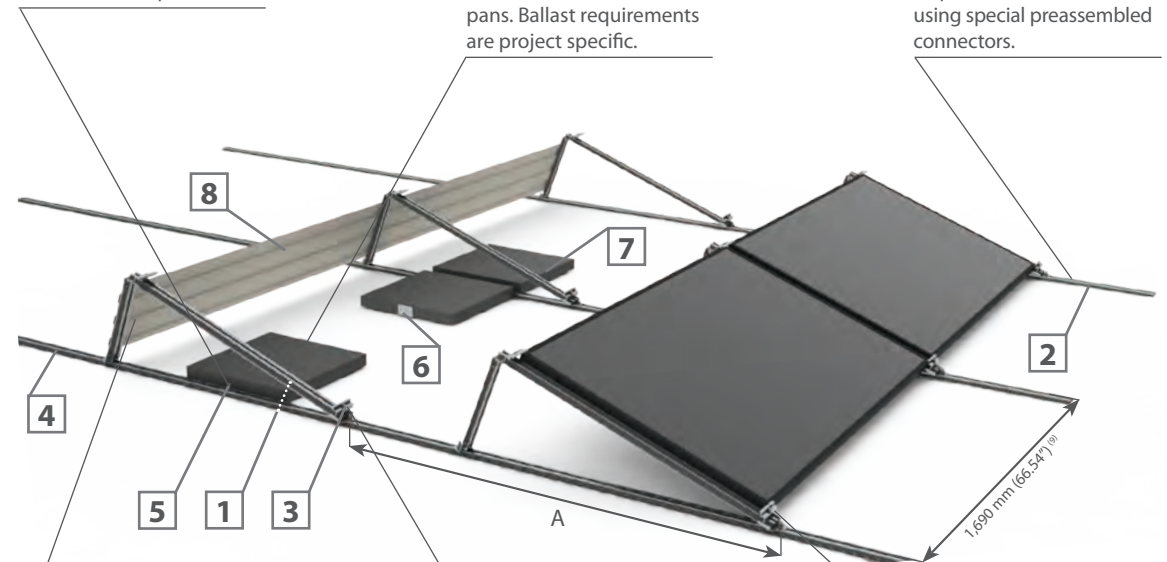
System components:



Ballast pans are attached to the ALU Rail 80 profiles.

Concrete ballast plates are inserted into the ballast pans. Ballast requirements are project specific.

The extension of ALU Rail 80 profiles can be achieved using special preassembled connectors.



Metal windshields can be installed to achieve better wind resistance.



Preassembled A-frames are fixed to the supporting ALU Rail 80 profiles.



PV modules are fixed to the structure with preassembled end clamps.

⁽⁹⁾ Dimensions specific for use with BISOL modules.

BISOL EasyMount ALU Twin Base 100

Layout guidelines:

Product type	Module incline (°)	Distance between rows - A ⁽¹⁰⁾
BISOL EasyMount ALU Twin Base 100	10°	min 227 cm (7'5")

⁽¹⁰⁾ Layout example for optimal yield-to-installed power ratio in Central Europe. Adjustable upon request.

Individual components:

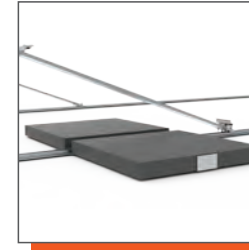
	ID Code	Component description
1	SEKP-EMTW_100	EasyMount ALU Twin Base 100
2	SEKP-EMRL80_5850	EasyMount ALU Rail 80 x 5850 mm set
3	SEKP-EMEC20	Clamp end EasyMount 20 mm, preassembled ⁽¹¹⁾
4	SEKP-EMCRL80	Connector set for EasyMount Rail 80
5	SEKP-EMT_BPN	Ballast pan for ballast set for ALU Rail 80
6	SEKP-EMT_BPNRL	Ballast pan EasyMount for ALU Rail 80, double-sided
7	SEK-LOAD_CP15	Load Concrete plate 40/40/4 cm (15kg)

⁽¹¹⁾ For PV modules with 35 mm frame thickness. Clamps with different height available upon request.

System components:



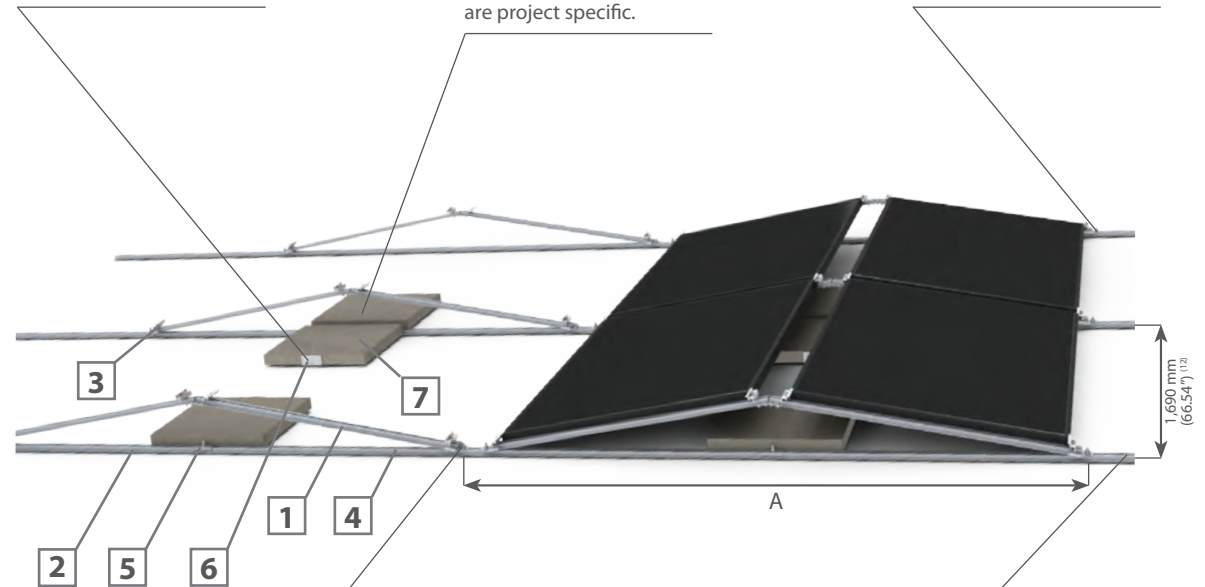
Double-sided ballast pans are laid across ALU Rail 80 profiles.



Concrete ballast plates are inserted into the ballast pans. Ballast requirements are project specific.



PV modules are fixed to the structure with preassembled end clamps.



Preassembled A-frames are fixed to the supporting ALU Rail 80 profiles.



The extension of ALU Rail 80 profiles can be achieved using special preassembled connectors.

⁽¹²⁾ Dimensions specific for use with BISOL modules.



BISOL EasyMount ALU Triangular

Versatile and resistant solution for flat roofs

BISOL EasyMount ALU Triangular mounting system is suitable for use on flat or pitched roofs with larger spans of the roof bearing structure, or roofs requiring higher wind and snow load resistance. The structure is available in several different incline angles and can be simply laid out without drilling into the roof. For pitched roofs, or if extra stability required, the ALU Triangular structure is mounted into the roof structure using hanger bolts. The preassembled hanger bolt connections on the A-frame reduce the on-site installation time.

Technical Specifications	Solution with EasyMount ALU Rail 80	Solution with EasyMount Profile 80 and Hanger bolts
Application	Flat roofs covered with bitumen, gravel or synthetic membrane	Pitched roofs with trapezoidal or corrugated metal sheet
Roof incline	Up to 5°	Any roof inclination
Method of installation	Laying without roof penetration	Fixing with hanger bolts into the roof structure
Module incline	12.5°, 20° and 30° (other angles available upon request)	
Module orientation	Landscape / Portrait upon request	
Module frame tolerances	Suitable for all framed module dimensions with frame thickness from 35 – 50 mm (1.38" – 1.97"), used with corresponding clamp	
Material	A-frame, ALU Rail 80, Profiles 50 and 80: aluminum EN-AW 6060 T6 Fixation elements: stainless steel A2-70	
System weight without ballast	0.02 kN/m ² (without PV module)	0.035 kN/m ² (without PV module)
Snow load per system	0 – 5.40 kN/m ² (with BISOL PV modules) ⁽¹³⁾	
Wind load (velocity)	Up to 170 km/h (106 mph)	
Additional stabilization	Ballast (concrete slabs) and Windshields	Windshields

⁽¹³⁾ Depending on project specifics. More information available upon request.



Excellent snow load resistance



Suitable for high wind zones



With or without roof penetration



Various incline angles



Lightweight layout option



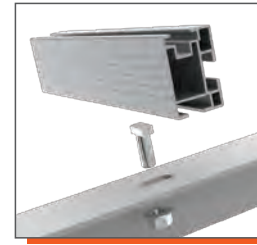
10-year product warranty

BISOL EasyMount ALU Triangular on ALU Rail 80

Individual components:

	ID Code	Component description
1	SEKP-EMTAL_125 SEKP-EMTAL_200 SEKP-EMTAL_300	EasyMount ALU Triangular 125 EasyMount ALU Triangular 200 EasyMount ALU Triangular 300
2	SEK-EM50_33	Easy Mount 50 x 33 x 6200 mm
3	SEK-EMRL80	EasyMount ALU Rail 80 x 5850 mm
4	SEKP-EMC50	Connector set for EasyMount 50 x 33
5	SEKP-EMCRL80	Connector set for EasyMount Rail 80
6	SEKP-EMEC35	Clamp end EasyMount, 35 mm preassembled ⁽¹⁴⁾
7	SEKP-EMMC35	Clamp middle EasyMount, 35 mm preassembled ⁽¹⁴⁾
8	SEK-HHS_10_25	Screw hammerhead M10 x 25 A2-70
9	SEK-DIN6923_10	Hexagon flange nut with serration M10 A2-70
10	SEKP-EMT_BPN	Ballast pan for ballast set for ALU Rail 80
11	SEK-EMT_BPNRL	Ballast pan EasyMount for ALU Rail 80, double-sided
12	SEK-LOAD_CP15	Load Concrete plate 40/40/4cm (15kg)
13	SEK-TWS125_1720W SEK-TWS200_1734W SEK-TWS300_1750W	Windshield 12.5 1700 x 200 mm, white Windshield 20 1700 x 340 mm, white Windshield 30 1700 x 500 mm, white
14	SEK-DIN7504_5525	Screw self-drilling 5.5 x 25 mm with washer

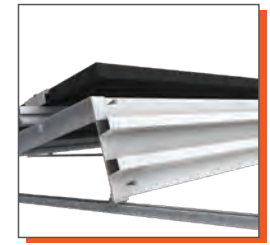
System components:



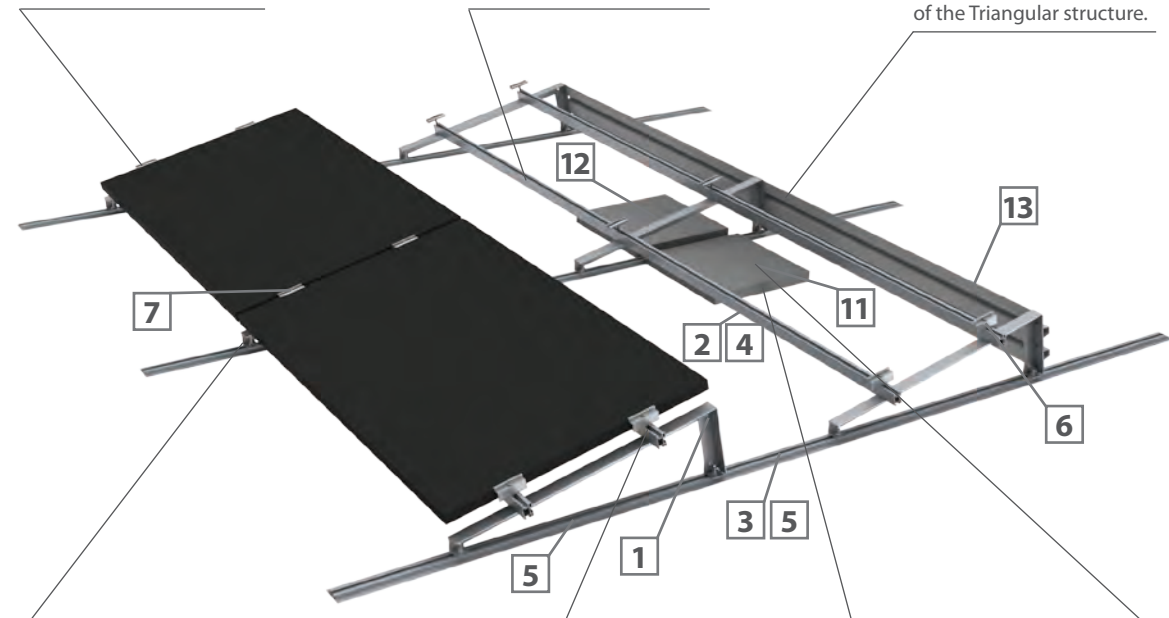
Profiles 50 are fixed horizontally on A-frames.



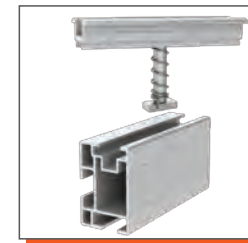
U-connectors allow for the extension of Profiles 50.



Metal windshield can be attached on the reverse side of the Triangular structure.



Preassembled A-frames are fixed to the supporting ALU Rail 80 profiles.



PV modules are fixed to Profiles 50 with preassembled end and middle clamps.



Double-sided ballast pans are laid across ALU Rail 80 profiles.



Concrete ballast plates are inserted into the ballast pans. Ballast requirements are project specific.

⁽¹⁴⁾ For PV modules with 35 mm frame thickness. Clamps with different height available upon request.

BISOL EasyMount ALU Triangular on Hanger Bolts

Individual components:

	ID Code	Component description
1	SEKP-EMTAL_125 SEKP-EMTAL_200 SEKP-EMTAL_300	EasyMount ALU Triangular 125 EasyMount ALU Triangular 200 EasyMount ALU Triangular 300
2	SEK-EM50_33	Easy Mount Profile 50 x 33 x 6200 mm
3	SEK-EM80_40	EasyMount Profile 80 x 40 x 6200 mm
4	SEKP-EMC50	Connector set for EasyMount 50 x 33
5	SEK-EMC80	Connector for EasyMount 80 x 40
6	SEKP-EMEC35	Clamp end EasyMount, 35 mm preassembled ⁽¹⁵⁾
7	SEKP-EMMC35	Clamp middle EasyMount, 35 mm preassembled ⁽¹⁵⁾
8	SEK-HHS_10_25	Hammerhead screw M10 x 25
9	SEK-DIN6923_10	Hexagon flange nut with serration M10 A2-70
10	SEK-HW100_200	Hanger bolt, wood, f10 x 200 mm
11	SEK-HST80_15650	Hanger bolt, steel, f8.0 x 100/50 mm, trapezoid
12	SEK-P82405_11 SEK-P82405_13	Adapter sheet 82 x 40 x 5, f11 Adapter sheet 82 x 40 x 5, f13
14	SEK-DIN7504_5525	Screw self-drilling 5,5 x 25 with washer
15	SEK-DIN975_10 SEK-DIN975_12	Rod M10 threaded Rod M12 threaded
16	SEK-HY150/330	Fixing injection mass 330 ml
17	SEK-EPDMSW_10 SEK-EPDMSW_12	Sealing washer EPDM M10 Sealing washer EPDM M12

System components:



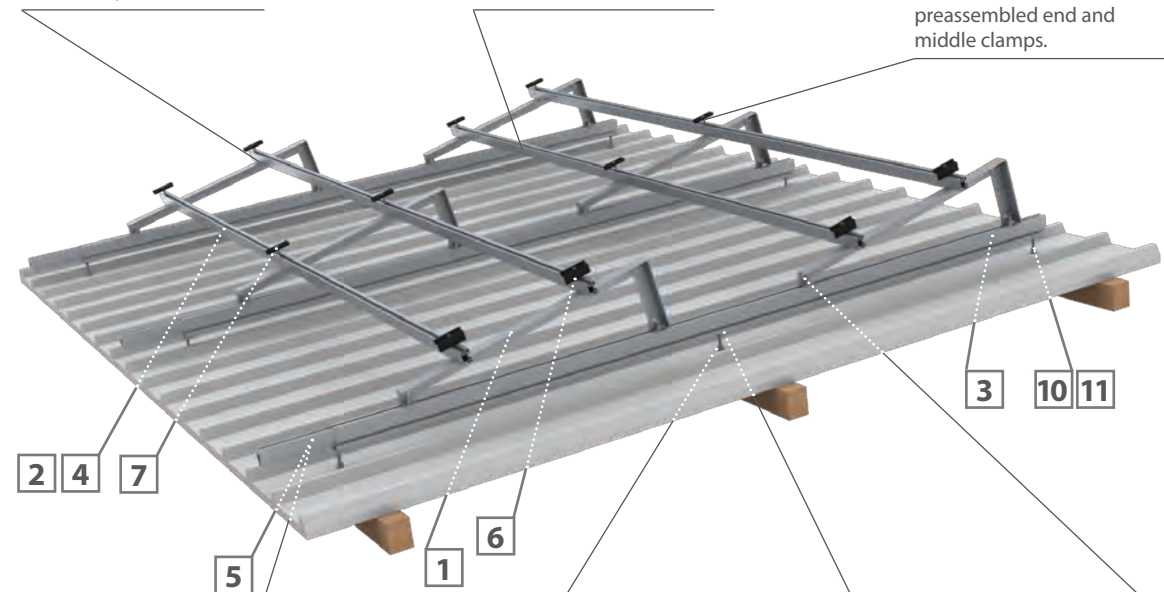
Profiles 50 are fixed horizontally on A-frames.



U-connectors allow the extension of Profiles 50.



PV modules are fixed to Profiles 50 with preassembled end and middle clamps.



Profiles 80 are extended by inserting and fixing the Connector 80.



The hanger bolt is screwed through the roof decking into the roof structure. The EPDM washer ensures a watertight connection.



Profiles 80 are mounted on hanger bolts.



Preassembled A-frames are fixed to the supporting Profiles 80.

⁽¹⁵⁾ For PV modules with 35 mm frame thickness. Clamps with different height available upon request.

BISOL EasyMount ALU Rail 80

Universal solution for all types of trapezoidal roof



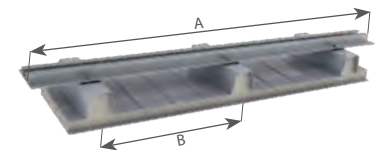
BISOL EasyMount ALU Rail 80 is a versatile solution suitable for all types of trapezoidal metal sheet roofs, designed to fit all wave angles and dimensions. This system is compatible with all module sizes and allows portrait and landscape module orientation with no additional material required. BISOL EasyMount ALU Rail 80 is made to withstand high wind and snow loads and provides high shear and pull-out resistance. Its simplicity and modularity allows for a quick and easy installation.

Technical Specifications

Application	Pitched roofs with trapezoidal metal sheet (minimal thickness 0.6 mm)
Trapezoidal wave type	All trapezoidal wave dimensions and angles
Method of installation	Directly into the metal sheet
Module orientation	Portrait or landscape
Module frame tolerances	Suitable for all framed module dimensions
Material	ALU Rail 80: aluminum EN-AW 6060 T6 Fixation elements: stainless steel A2-70
System weight	0.005 kN/m ² (without PV module)
Dimensions	Width: 80 mm, Height: 15 mm, Length: 450 mm or 530 mm or 730 mm



Length of ALU Rail 80 - A	Distance between two waves - B
450 mm (1'5.7")	up to 21 cm (8.3")
530 mm (1'8.9")	21 (8.3") - 25 cm (9.8")
730 mm (2'4.7")	25 (9.8") - 35 cm (1'1.8")



Fits all wave dimensions and angles



Watertight connection



High shear and pull-out resistance



Only very basic tools required



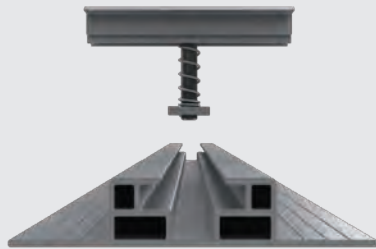
Quick and easy installation



10-year product warranty

BISOL EasyMount ALU Rail 80

Cross section of ALU Rail 80:



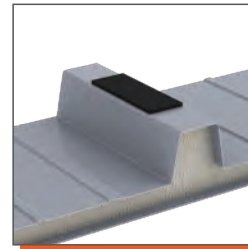
Individual components:

	ID Code	Component description
1	SEKP-EMRL80_450	EasyMount ALU Rail 80 x 450 mm set
	SEKP-EMRL80_530	EasyMount ALU Rail 80 x 530 mm set
	SEKP-EMRL80_730	EasyMount ALU Rail 80 x 730 mm set
2	SEKP-EMEC35	Clamp end EasyMount, 35 mm preassembled ⁽¹⁶⁾
3	SEKP-EMMC35	Clamp middle EasyMount, 35 mm preassembled ⁽¹⁶⁾
4	SEK-EMGP	Grounding plate EasyMount ⁽¹⁷⁾

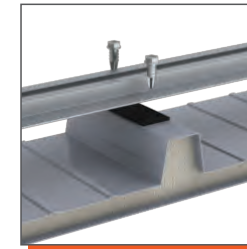
⁽¹⁶⁾ For PV modules with 35 mm frame thickness. Clamps with different height available upon request.

⁽¹⁷⁾ For grounding refer to the national regulatory requirements.

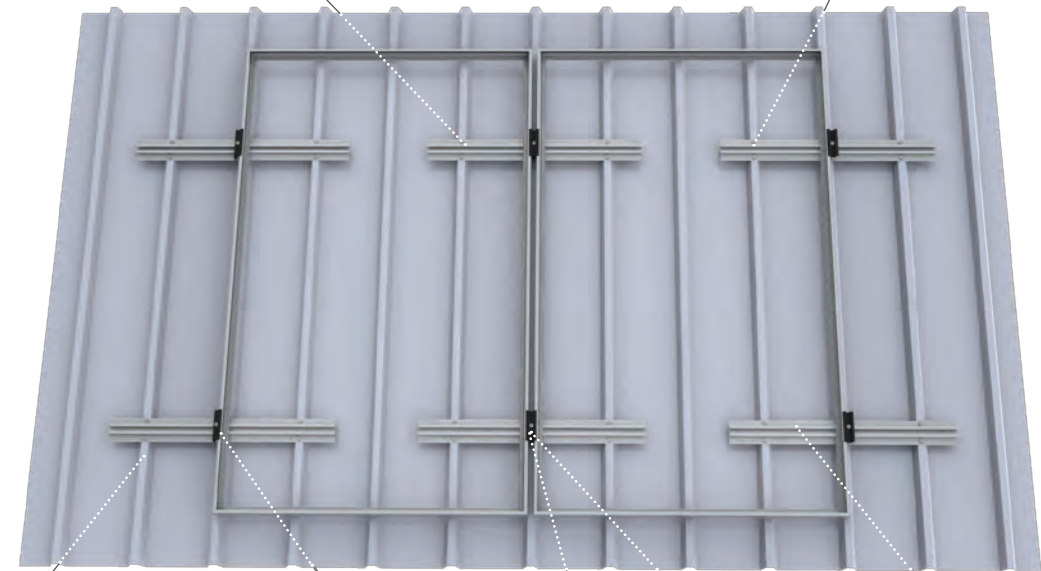
System components:



EPDM strip should be placed under the ALU Rail 80 to protect the roof surface.



ALU Rail 80 is fixed with 2 screws per wave.



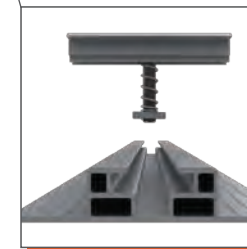
2

3

1



ALU Rails 80 are mounted across three adjoining waves.



PV modules are fixed to ALU Rails 80 with preassembled end and middle clamps.



BISOL EasyMount Hook

Double-adjustable solution for various types of tiled roofs

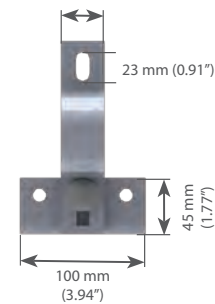
BISOL EasyMount Hook is a perfect solution for pitched roofs covered by any type of tile with the exception of barrel tiles. The double adjustability of the hook permits use on roofs with large wave tiles, enables levelling out the uneven roof surfaces and provides more efficient cooling of the modules by lifting them further away from the roof surface. The system allows for portrait or landscape module orientation by mounting the profiles horizontally or vertically without the use of the grid.

Technical Specifications

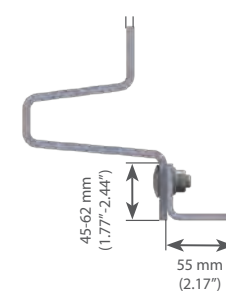
Application	Any type of tiled roof (except for barrel tiles) with roof inclination from 10° on
Method of installation	Attached to rafters
Module orientation	Portrait or landscape
Module frame tolerances	Suitable for all framed module dimensions with appropriate clamp
Maximum load on hook	BISOL EasyMount Hook 6-35: 120 kg (265 lbs) BISOL EasyMount Hook 8-30: 200 kg (441 lbs)
Snow load per system	0 – 5.40 kN/m ² (with BISOL PV modules)
Material	Hook: stainless steel 1.4301 Fixation elements: stainless steel A2-70 Profile 50: aluminum EN-AW 6060 T6
Height adjustability	162 – 194 mm (6.36"–7.64") from the rafter



35 mm (1.38") / 30 mm (1.18")



6 mm (0.24") / 8 mm (0.31")



Hook 6-35
Hook 8-30



Suitable for most tiled roofs



Helps levelling out uneven roof surfaces



Double height adjustable



Landscape orientation without use of grid



Efficient cooling



10-year product warranty

BISOL EasyMount Hook

Layout guidelines installation with BISOL PV modules

		Distance	
A ⁽¹⁸⁾		<40 cm (15.75")	
B ⁽¹⁸⁾		80 - 150 cm (31.50"-59.06")	
		Spans between rafters	
C	Any	85 cm ± 6.5 cm (33.5" ± 2.6")	
Module orientation	Landscape	Portrait	Landscape
Solution	Profile 50 ⁽¹⁹⁾ / Grid (Profile 50 + Profile 50)	Profile 50	Profile 50 + L-connector

⁽¹⁸⁾ Dimensions specific for use with BISOL modules.

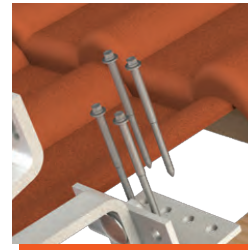
⁽¹⁹⁾ For modules that can be mounted on the short side of the frame.

Individual components:

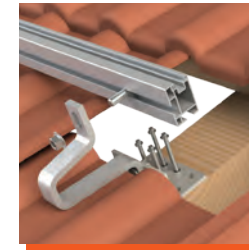
	ID Code	Component description
1	SEK-2HS_6 SEK-2HS_8	Hook double adjustable 6-35 Hook double adjustable 8-30
2	SEK-EM50_33	Easy Mount 50 x 33 x 6200 mm
3	SEKP-EMC50	Connector set for EasyMount 50 x 33
4	SEK-EMLC	Connector L EasyMount
5	SEKP-EMEC35	Clamp end EasyMount, 35 mm preassembled ⁽²⁰⁾
6	SEKP-EMMC35	Clamp middle EasyMount, 35 mm preassembled ⁽²⁰⁾
7	SEK-W65_100	Wood screw with EPDM washer 6,5 x 100 mm
8	SEK-HHS_10_25	Hammerhead screw M10 x 25 A2-70
9	SEK-DIN6923_10	Hexagon flange nut with serration M10 A2-70

⁽²⁰⁾ For PV modules with 35 mm frame thickness. Clamps with different height available upon request.

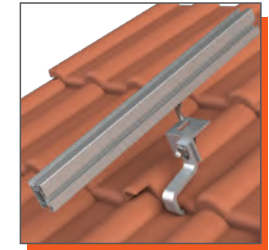
System components:



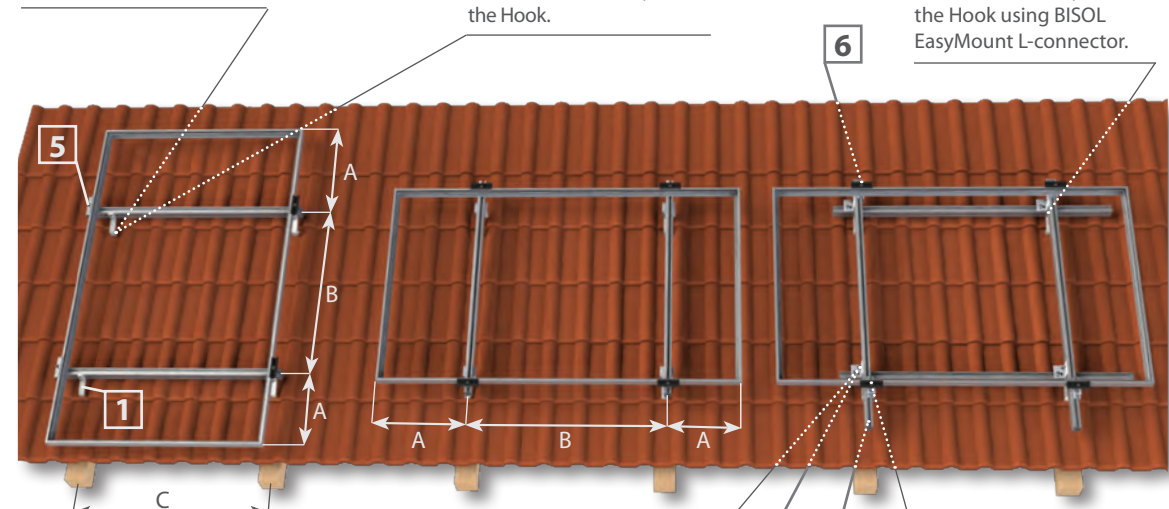
BISOL Hook is fixed to a rafter using four wood screws with EPDM washers.



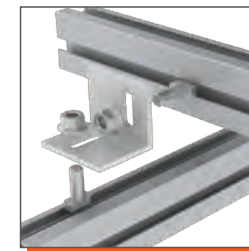
For portrait module orientation Profile 50 is mounted horizontally on the Hook.



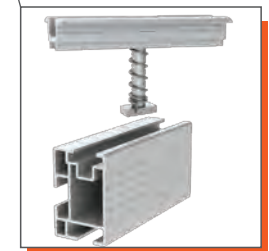
For landscape module orientation Profile 50 is mounted vertically on the Hook using BISOL EasyMount L-connector.



U-connectors allow for the extension of Profiles 50.



For larger spans and landscape module orientation a grid can be built by connecting two intersecting Profiles 50 with the L-connector.



PV modules are fixed to Profiles 50 with preassembled end and middle clamps.




BISOL EasyMount Hanger Bolt


All-round solution for wind resistant applications


BISOL EasyMount Hanger Bolt is an effective all-round solution for installations on trapezoidal and corrugated pitched roofs. Whilst light-weight, it is made from top quality rigid materials to withstand extreme wind loads. Various options are available for different spans and materials of the roof carrying structure.


Technical Specifications	
Application	Pitched roofs with trapezoidal metal sheet or corrugated roofs with any roof inclination
Method of installation	Directly through the metal sheet into the steel, wooden or concrete roof structure
Module orientation	Portrait or landscape
Module frame tolerances	Suitable for most framed module dimensions, applicable to different clamp types
Material	Hanger Bolt, Threaded Rod and fixation elements: stainless steel Profiles 50 and 80: aluminum EN-AW 6060 T6
System weight	0.015 kN/m ²





- 

Versatile solution
- 

High snow and wind resistance
- 

Adjustable in height
- 

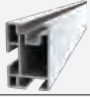







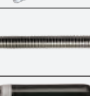

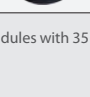
Watertight connection
- 

Quick and easy installation
- 

10-year product warranty

BISOL EasyMount Hanger Bolt

Individual components:

		ID Code	Component description
1		SEK-EM50_33	Easy Mount Profile 50 x 33 x 6200 mm
2		SEK-EM80_40	EasyMount Profile 80 x 40 x 6200 mm
3		SEKP-EMC50	Connector set for EasyMount 50 x 33
4		SEK-EMC80	Connector for EasyMount 80 x 40
5		SEKP-EMEC35	Clamp end EasyMount, 35 mm preassembled ⁽²¹⁾
6		SEKP-EMMC35	Clamp middle EasyMount, 35 mm preassembled ⁽²¹⁾
7		SEK-HW100_200	Hanger bolt, wood, fi10 x 200 mm
8		SEK-HST80_15650	Hanger bolt, steel, fi8.0 x 100/50 mm, trapezoid
9		SEK-HHS_10_25	Hammerhead screw M10 x 25
10		SEK-DIN6923_10	Hexagon flange nut with serration M10
11		SEK-DIN7504_5525	Screw self-drilling 5.5 x 25 mm with washer
12		SEK-EMLC	Connector L EasyMount
13		SEK-P82405_11	Adapter sheet 82 x 40 x 5, fi11
		SEK-P82405_13	Adapter sheet 82 x 40 x 5, fi13
14		SEK-DIN975_10	Rod M10 threaded
		SEK-DIN975_12	Rod M12 threaded
15		SEK-HY150/330	Fixing injection mass 330 ml
16		SEK-EPDMSW_10	Sealing washer EPDM M10
		SEK-EPDMSW_12	Sealing washer EPDM M12

⁽²¹⁾ For PV modules with 35 mm frame thickness. Clamps with different height available upon request.

System components:



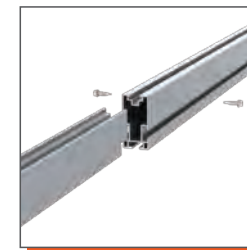
Hanger bolt is screwed through the decking into the roof structure. EPDM-sealing washer insures a watertight connection.



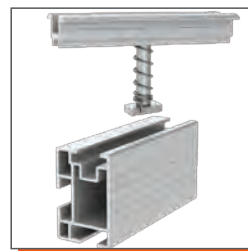
Profiles 50 or 80 are mounted directly on Hanger bolts.



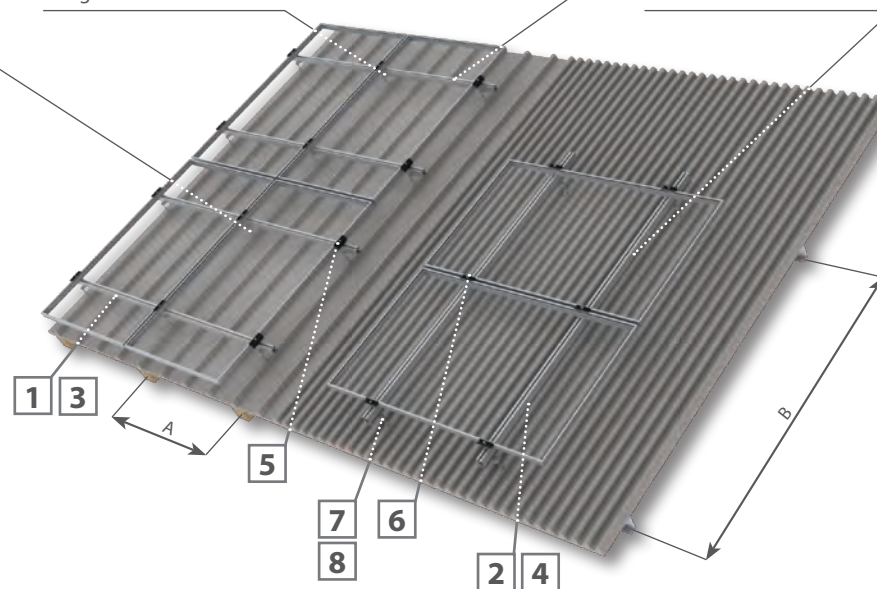
U-connectors allow the extension of Profiles 50.



Profiles 80 are extended by inserting and fixing the Connector 80.



PV modules are fixed to Profiles 50 with preassembled end and middle clamps.



	Horizontal roof supporting structure - A				Vertical roof supporting structure - B				
	≤250 cm (98.43")		>250 cm (98.43")		≤200 cm (78.74")		>200 cm (78.74")		85 cm ± 6.5 cm (33.5" ± 2.6")
Module orientation	Landscape	Portrait	Landscape	Portrait	Landscape	Portrait	Landscape	Portrait	Landscape
Solution	Profile 50	Profile 50 ⁽²²⁾ / Grid (Profile 50 + Profile 50)	Profile 80	Profile 80 ⁽²²⁾ / Grid (Profile 80 + Profile 50)	Profile 50 ⁽²²⁾ / Grid (Profile 50 + Profile 50)	Profile 50	Profile 80 ⁽²²⁾ / Grid (Profile 80 + Profile 50)	Profile 80	Profile 50

⁽²²⁾ For modules that can be mounted on the short side of the frame.



BISOL Group
Latkova vas 59a
3312 Prebold
SLOVENIA
T: +386 (0)3 703 22 50
F: +386 (0) 3 703 22 63
E: info@bisol.si

BISOL Benelux
Wingepark 47
3110 Rotselaar
BELGIUM
T: +32 (0)484 08 80 78
E: info@bisol.com

BISOL Solar Ltd. UK
Capital Business Centre
Unit 11J, 22 Carlton Road
South Croydon, CR2 0BS
UNITED KINGDOM
T: +44 (0)208 916 2404
F: +44 (0)208 916 2001
E: uk@bisol.com

BISOL Italy
Via Bonazzi, 5
40013 Castel Maggiore (BO)
ITALY
T: +39 051 705 697
F: +39 051 705 697
E: italia@bisol.com

For compatibility of BISOL EasyMount mounting solutions with specific roof design or roofing materials please consult your roofing materials supplier or project designer.

Dealer information: